

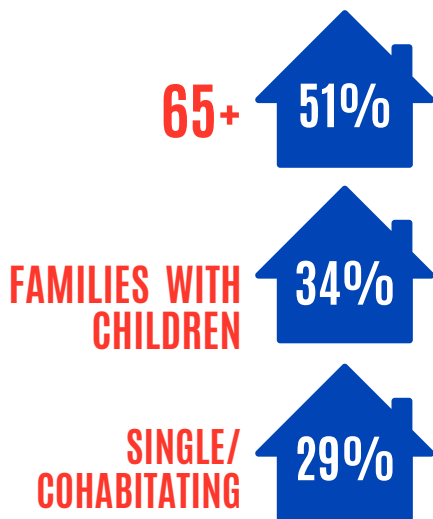
FINANCIAL HARDSHIP IN THE TRI-COUNTY

BERKELEY, CHARLESTON & DORCHESTER COUNTY

In the Tri-County, there are 347,045 households (38%) that can't afford the basics. These households fall below the ALICE Threshold, which includes households in poverty and **ALICE®** (Asset Limited, Income Constrained, Employed) households. Struggling yet hidden in plain sight, ALICE earns above the poverty level, but less than the cost of basics.



HARDSHIP BY HOUSEHOLD



WHEN WORKING ISN'T ENOUGH



*For a family of four with an infant and a preschooler

Data Source: United For ALICE® (2025). *The State of ALICE in South Carolina*



UnitedForALICE.org
@United4ALICE



Trident
UNITED WAY

BE PART OF THE SOLUTION

TUW.org/ALICE